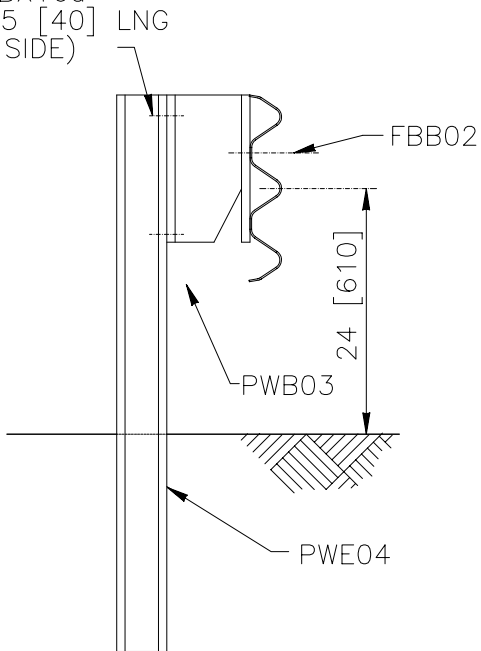


ELEVATION

2-FBX16a
x 1.5 [40]
(EA SIDE)



1994

MODIFIED THRIE-BEAM GUARDRAIL

SGR09c

SHEET NO.

DATE:

1 of 4

10/12/2005

INTENDED USE

Modified thrie-beam guardrails should be used in locations where there is at least 24 inches [600 mm] of available deflection space. Any common W-beam terminal can be used in conjunction with an STG01 W-beam-to-thrie-beam transition to provide a crashworthy terminal and anchorage.

SGR09c is a Test Level 4 barrier.

COMPONENTS

Unit length = 150 inches [3810 mm]

Designator	Component	Number
FBB01	Splice bolt and nut	8
FBB02	Rail-blockout bolt and nut	2
FBX16a	Post-blockout bolt (1.5 inches [40 mm]) and nut	4
PWB03	Modified thrie blockout	2
PWE04	Steel guardrail post	2
RTM02a	Thrie-beam rail	1
RTB01a	Thrie-beam backup plate	1

APPROVALS

FHWA Acceptance Letter [B-64](#), 2/14/00.

REFERENCES

M.E. Bronstad, J.E. Michie and J.D. Mayer, Jr., *Performance of Longitudinal Traffic Barriers*, National Cooperative Highway Research Program Report Number 289, Transportation Research Board, June, 1987.

D.L. Ivey, R.R. Robertson and C.E. Buth, *Test and Evaluation of W-Beam and Thrie-Beam Guardrails*, Federal Highway Administration, FHWA-RD-82-071, Washington, D.C., 1986.

C.E. Buth, W.L. Campise, L.I. Griffin, M.L. Love, and D.L. Sicking, *Performance Limits of Longitudinal Barriers*, Federal Highway Administration, Report No. FHWA-RD-86-153 (vol. 1), Washington, D.C., May 1986.

CONTACT INFORMATION

Federal Highway Administration
Office of Safety
400 Seventh Street, SW
Washington, DC 20590
202-366-2288
safety.fhwa.dot.gov

MODIFIED THRIE-BEAM GUARDRAIL

SGR09c

SHEET NO.

DATE

2 of 4

10/13/2005

MODIFIED THRIE-BEAM GUARDRAIL

SGR09c

SHEET NO.

DATE:

3 of 4

10/11/2005



MODIFIED THRIE-BEAM GUARDRAIL

SGR09c

SGR09c		
SHEET NO.	DATE	
4 of 4	10/13/2005	